





## Clos

**SolidCoat  
Surface**



### Included

- Clos of SolidCoat Surface
- Valve not included
- Brackets not included
- Cardboard packaging

### Finishes



Blanco



Vanilla



Sand



Titan



Negro

### Textures



Silken

### Sizes

- A 61 from 201 cm (>201 consult)
- B 45,5 from 50 cm (>50 consult)

Tolerance  $\pm 5$  mm



### Basins placement



Top or shelf



Customized  
wasbasin  
position



Customized  
2+ wasbasin  
position

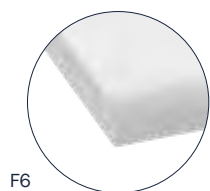


Customized  
displaced basin

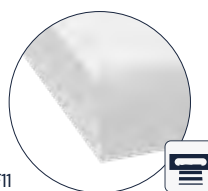


+2 basins  
customized  
displaced

### Panel options



F6



F11



### Customization



Integrated  
towel rail



Skirt



Drilling for  
taps



Only with

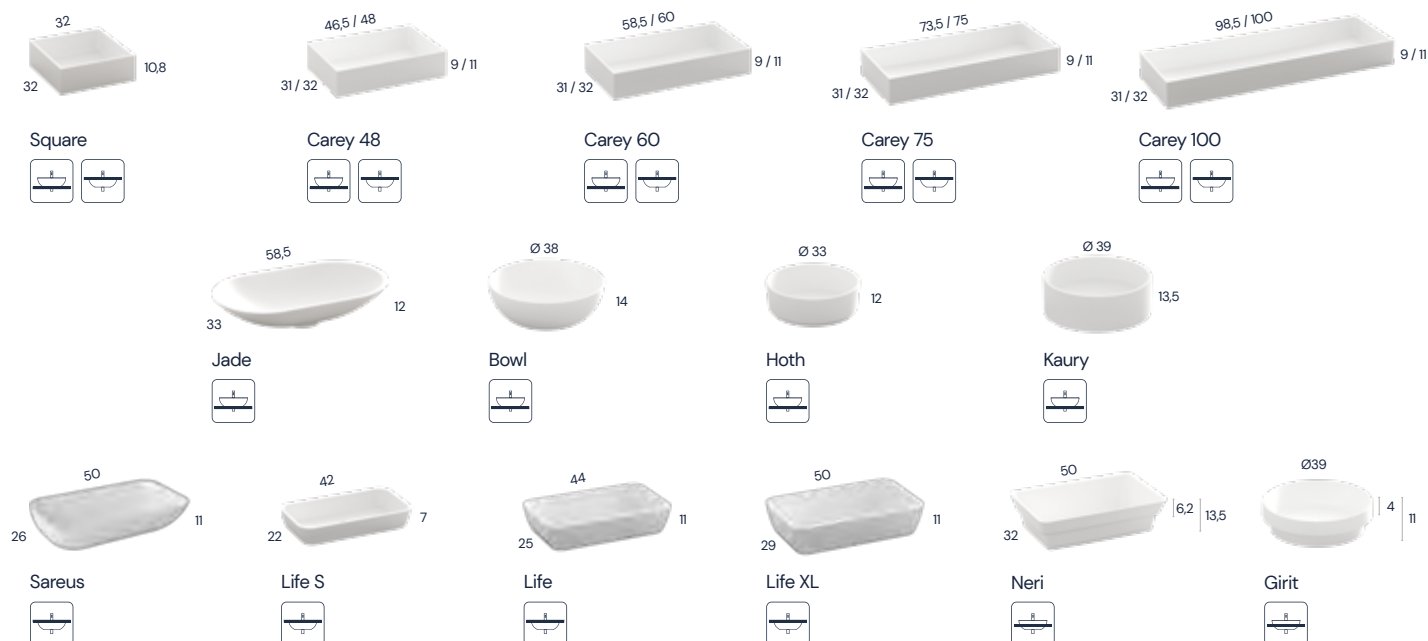


Overflow

## Clos

**SolidCoat  
Surface**

### Basin options

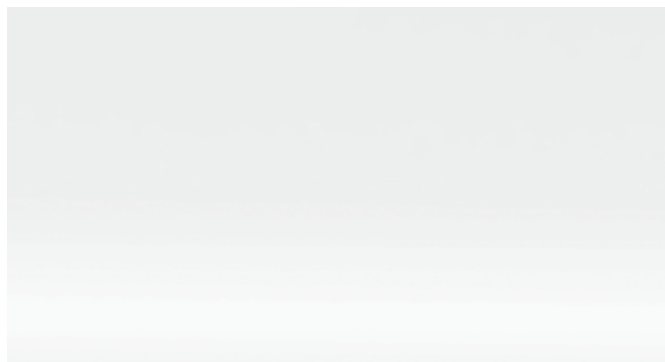


Measures in cm

### Description of materials

## SolidCoat Surface

It is a highly durable and resistant material, made from gelcoat and composted polyester resins with mineral fillers that benefits from a double surface protection process with polyurethane, which, due to its low porosity, prevents the proliferation of germs and gives it greater impermeability, inalterability over time, resistance, ease of maintenance and one of the most matt and natural finishes on the market. SolidCoat Surface can also be repaired.



## Clos

**SolidCoat  
Surface**

### Other properties

Resistance to chemicals:

Tested product	Exposure time	Degradation
Bleach	24h	4
Salfuman	24h	4
Mr. Clean	24h	4
Viakal	24h	2
Vinegar	24h	4
Ammonia	24h	5
KH-7	24h	5
Cillit Bang	24h	5
Medium colour hair dye	1h	5
Dark colour hair dye	1h	5
Lipstick	24h	5
Oxygenated water	24h	5

<b>Valuation</b>	1	Surface degradation and/or blistering
	2	Significant change in brightness and/or colour
	3	Moderate change in brightness and/or colour
	4	Slight change in brightness or colour, only visible from certain inspection angles
	5	No visible change

The data and characteristics indicated do not bind BAÑOS 10 S.L., which reserves the right to make any changes it deems appropriate, without being bound by it upon prior notice or replacement. Valid data except error or omission.



Ctra. Onda - Vila-real, Km. 12,6  
12200 Onda (Castellón) Spain  
+34 964 626 300

Customer service [export@b10bath.com](mailto:export@b10bath.com)  
[www.b10bath.com](http://www.b10bath.com)