

b10

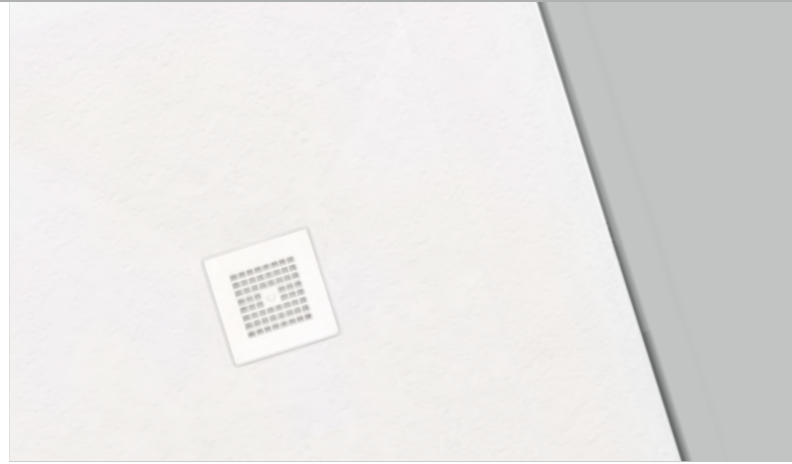
Elysse 43



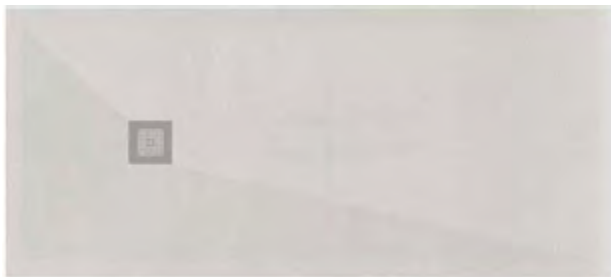
PRODUCT CARD

P-IMP-MKT-131 1223 EN

be bath
be a ten



Elysse 43 Light+Skin ^{15kg/m²}



Sizes

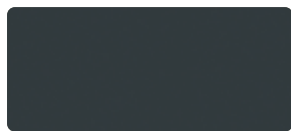
- Widths: 70 and 80 cm
- Lengths: 90 to 170 cm
- Nominal thickness: 3,5 cm

Dimensional tolerance of ±5 mm.

Product characteristics

- Impact resistant
- Anti-slip Class 1 (UNE-41901)
- Anti-bacterial, preventing the proliferation of germs
- Totally waterproof
- Repairable

Texture



Smooth

Finishes



Blanco

Negro

Installation characteristics

- Above-ground installation
- Sealing with non-acetic silicone

Installation options



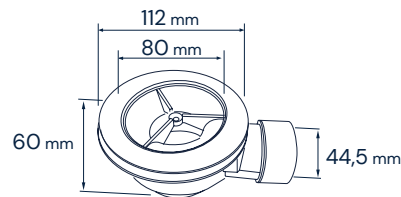
Included

- Extra-flat shower tray
- Standard drain Ø 90 mm (36 l/min)
- Stainless steel drain cover
- Installation manual
- Cardboard packaging

Sizes and nominal weights approx (in kg)

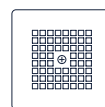
B \ A	70	80
90	16,50	-
100	17,50	19,60
120	19,40	21,50
140	21,20	23,30
160	25,10	27,30
170	26,20	28,30

Drain included



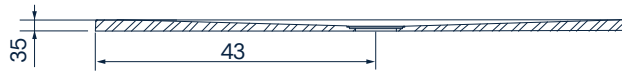
Standard drain
Ø 90 mm 36 l/min
(UNE-EN 274-2)

Drain cover

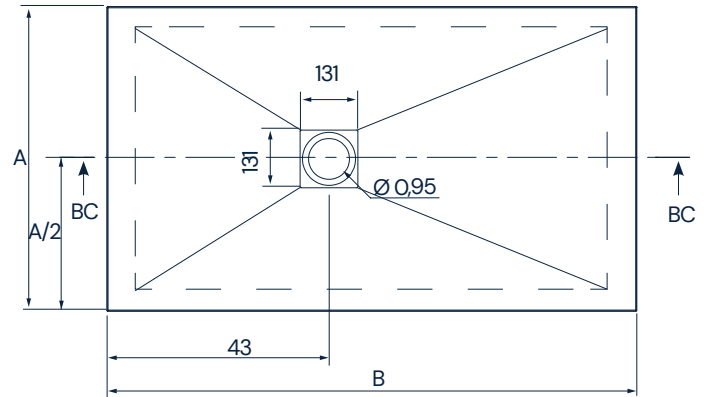


Drops in sewage pipes should be at least 2%

Elysse 43 Light+Skin ^{15Kg/m²}



Dimensions in mm

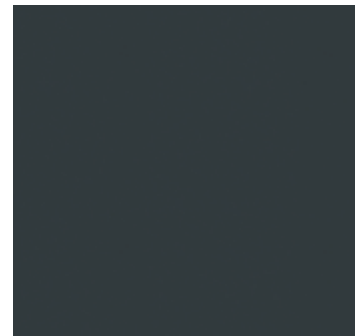


Description of materials

Light+Skin ^{15Kg/m²}

Light+Skin is an exclusive b10 material that provides an impact resistance 10 times higher than conventional resin materials with mineral fillers. It is produced from resin alloys and GelCoat combined with fibres and chemical compounds of high compaction.

In addition to its high impact resistance, the product is also very lightweight, which makes it easy and convenient to install, as it can be easily installed by one person. It also helps to reduce the carbon footprint as it is made with ecological resins and can be transported in large volumes. Light+Skin weighs approximately 15 Kg/m².



Other properties

Declared benefits:

Characteristics essential	Submissions	Harmonised technical specifications
Cleanability	Class 1	EN 14527:2016
Durability	Class 1	EN 14527:2016
Water Evacuation	Correct	EN 14527:2016
Stability in the background	Correct	EN 14527:2016 + A1:2019
Resistance to chemicals and dyes	Correct	EN 14527:2016 + A1:2019
Resistance to temperature variations	Correct	EN 14527:2016
Slip resistance	Class 3	UNE 41901

Resistance to chemicals:

Tested product	Exposure time	Degradation
Bleach	24h	5
Salfuman	24h	5
Mr. Clean	24h	5
Viakal	24h	4
Vinegar	24h	4
Ammonia	24h	5
KH-7	24h	5
Cillit Bang	24h	5
Acetone	1min	4
Isopropanol	5min	5
Nail polish	24h	4
Medium colour hair dye	1h	4
Dark colour hair dye	30min	5
Lipstick	24h	5
Oxygenated water	24h	5
Betadine	24h	5

Valuation	1	Surface degradation and/or blistering
	2	Significant change in brightness and/or colour
	3	Moderate change in brightness and/or colour
	4	Slight change in brightness or colour, only visible from certain inspection angles
	5	No visible change

The data and characteristics indicated do not bind BAÑOS 10 S.L., which reserves the right to make any changes it deems appropriate, without being bound by it upon prior notice or replacement. Valid data except error or omission.



Ctra. Onda - Vila-real, Km. 12,6
12200 Onda (Castellón) Spain
+34 964 626 300

Customer service export@b10bath.com
www.b10bath.com