

**b10**

**Hit**



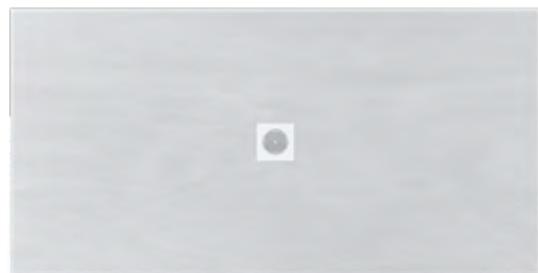
**PRODUCT CARD**

P-IMP-MKT-131 · 0124 EN

be **bath**  
be **a ten**



Hit



### Included

- Extra-flat shower tray
- Drain Ø90 mm screwed
- Stainless steel drain cover
- Installation manual
- Cardboard packaging

### Sizes

- Widths: 70 and 80 cm
- Lengths from 100 to 200 cm
- Nominal thickness 2,5 cm

Dimensional tolerance of ±5 mm.

### Textures



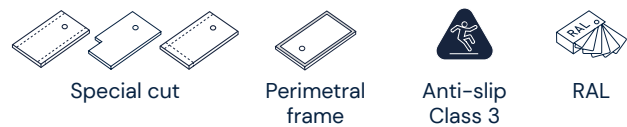
### Sizes and nominal weights approx (in kg)

B \ A	70	80
100	32	37
120	39	44
140	45	52
160	52	59
180	58	66
200	64	74

### Product characteristics

- Completely flat on the underside
- Impact resistant
- Anti-slip Class 2 (UNE-41901)
- Anti-bacterial, preventing the proliferation of germs
- Totally waterproof
- Repairable

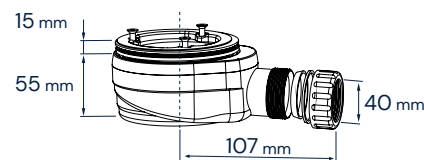
### Customization



### Finishes

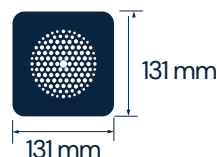


### Drain included

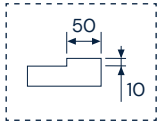


Drain Ø90 mm  
screwed (UNE-EN  
274-2)

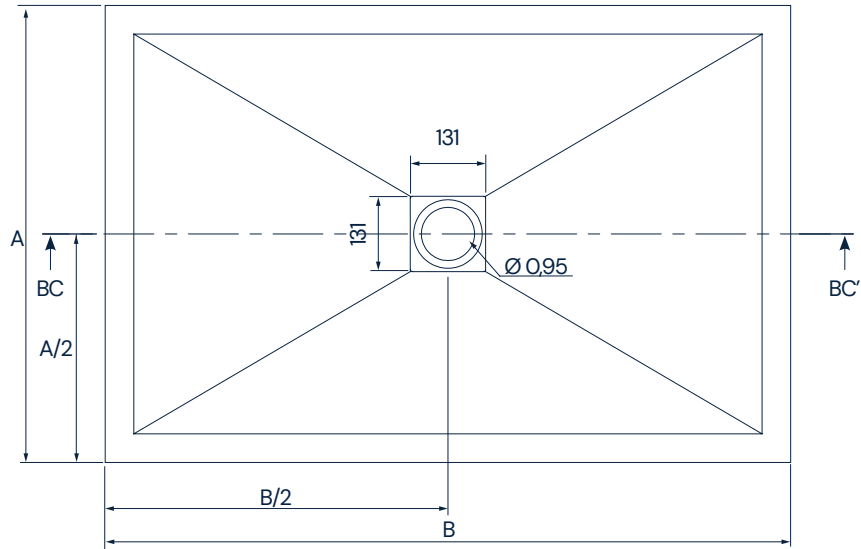
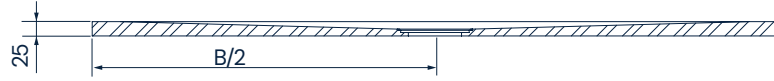
### Drain cover



Hit



Perimetral frame

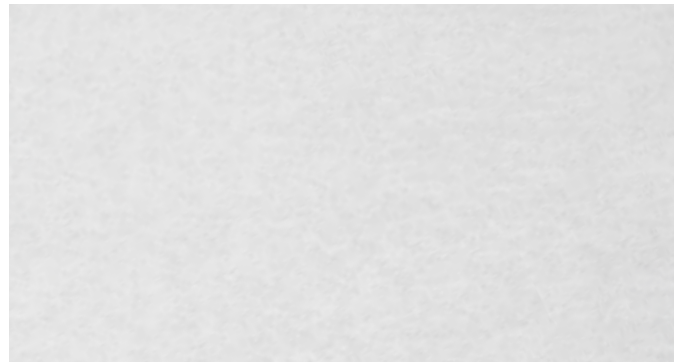


Dimensions in mm

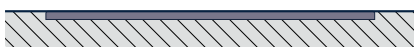
### Description of materials



Tesstone from b10 is a highly durable and resistant sustainable material made of natural mineral fillers and recycled recyclates from proximity composted with PET resins (24% recycled). The b10 Tesstone shower trays benefit from a double process of surface protection and finishing with ISO NPG gelcoat and PU cover, which gives them greater impermeability, inalterability over time, resistance, ease of maintenance and one of the most matte and natural finishes on the market.



### Installation options



### Installation characteristics

- Installation recessed, above ground or raised
- Recommended adhesive type R-2-T (UNE-12004)
- Watertight seal with non-acetic silicone

Drops in sewage pipes should be at least 2%

**Other properties**

Declared benefits:

Characteristics essential	Submissions	Harmonised technical specifications
Cleanability	Class 1	EN 14527:2016
Durability	Class 1	EN 14527:2016
Water Evacuation	Correct	EN 14527:2016
Stability in the background	Correct	EN 14527:2016 + A1:2019
Resistance to chemicals and dyes	Correct	EN 14527:2016 + A1:2019
Resistance to temperature variations	Correct	EN 14527:2016
Slip resistance	Class 2 (Stone) Class 3 (Concrete)	UNE 41901

Resistance to chemicals:

Tested product	Exposure time	Degradation
Bleach	24h	5
Salfuman	24h	5
Mr. Clean	24h	5
Viakal	24h	4
Vinegar	24h	4
Ammonia	24h	5
KH-7	24h	5
Cillit Bang	24h	5
Acetone	1min	4
Isopropanol	5min	5
Nail polish	24h	4
Medium colour hair dye	1h	4
Dark colour hair dye	30min	5
Lipstick	24h	5
Oxygenated water	24h	5
Betadine	24h	5

Valuation	1	Surface degradation and/or blistering
	2	Significant change in brightness and/or colour
	3	Moderate change in brightness and/or colour
	4	Slight change in brightness or colour, only visible from certain inspection angles
	5	No visible change

The data and characteristics indicated do not bind BAÑOS 10 S.L., which reserves the right to make any changes it deems appropriate, without being bound by it upon prior notice or replacement. Valid data except error or omission.

